

CLERMONT SHOW

The Isaac Region's Show

27th, 28th and 29TH MAY 2019

BEEF, COMMERCIAL & CATTLEMEN'S CHALLENGE CATTLE SCHEDULE

2019

CLERMONT SHOW COMMITTEE AND STEWARDS

PO Box 82
Clermont Qld 4721
Phone: 07 4983 3023

Email: admin@clermontshow.com
Website: www.clermontshow.com.au
Facebook: Clermont Show

There are many more committee members and volunteers who annually assist in the preparations and hosting of the Clermont Show – The Isaac Region’s Show. These willing volunteers ensure that our community event is enjoyed by families and businesses in the Isaac Region. If you would like to be involved, please contact us – all ages and experience welcome - all you need is enthusiasm!

PRESIDENT	Mr Scott Moller
VICE-PRESIDENT	Mr Douglas Burnett
	Mr Scott Hensley
SECRETARY	Mrs Kate Flohr
TREASURER	Ms Anna Dennis

CHIEF STEWARDS

BEEF CATTLE	Tim Cook	4983 2730
COMMERCIAL CATTLE	Michael Borg	4983 5174
CATTLEMEN’S CHALLENGE	David Conachan	0428 770 866
DAIRY GOATS	Karen Coghill	0428 893 939
RING 1 & 2	Melissa Robertson	0429 055 814
SHOW JUMPING	Julie Warren	0437 970 492
PAVILION	Shelley Laverty	0439 383 949
POULTRY & CAGED BIRDS	Hannah Coghill	0436 441 606
STUD CATTLE	Rosie Robertson	0418 980 600
WOODCHOP	Darren Marks	0429 835 076
CHAMPIONSHIP DOG SHOW	Val Horne	0427 831 205
WORKING DOGS	Paul Wroe	4985 9297
SPONSORSHIP	Andrea Moller	4983 5402
TRADE & SERVICES	Joanne Salmond	4983 5362
SHOW GIRL EVENTS	Nikki Robertson	0400 090 560

SPONSORS OF THE CLERMONT SHOW – THE ISAAC REGION’S SHOW

Our local show would not be possible without the loyal businesses, families and individuals who support the competitions and events. Thank You sincerely from the Clermont Show Committee for your involvement and commitment!

SECTION A – CATTLE

DIVISION A – Beef Cattle

CHIEF STEWARD: Tim Cook – PHONE: (07) 4983 2730 EMAIL: ethelglen@bigpond.com

JUDGE: TBA

JUDGING: 9.00am Monday 27th May 2019

AUCTION SALE: 9.00am Tuesday 28th May 2019

REGULATIONS AND CONDITIONS – PLEASE NOTE WELL

1. ALL EXHIBITS **MUST** BE ON THE GROUNDS BY **10.00 AM ON SUNDAY 26th MAY 2019**
LATE ARRIVALS MAY BE DISQUALIFIED.
2. Entry Fee \$7.70 per head in all classes (inc GST) except for entries in Class 17 where the nomination fee is waived. **ALL EXHIBITS, MALE & FEMALE, MUST BE OFFERED FOR SALE.** Exhibits sold shall be levied the regular 5.5% (inc GST) commission on the sale price except for the entries in Class 17 where the Agents & the Show Society have waived commission. All charges/fees will be deducted by the agents and itemised on the vendors' account sales and a nomination fee will be paid to the Show Committee.
3. **CONDITIONS OF AUCTION SALE:** - All cattle nominated in Divisions A – Beef Cattle will be presented for sale and will do so under Queensland Livestock, Produce and Property Brokers Association standard terms and conditions of sale at auction. Under these conditions the exhibitor, as vender, has the legal right to reject the sale price offered. In order to do so the vender must, in a manner that is absolutely clear to all parties, declare a "NO SALE" **before** the sale is declared and "knocked down" by the auctioneer. *Once knocked down, stock is deemed to be sold and the exhibitor, as vendor, will have made a legally binding sale.*
4. Wild & Fractious cattle may be disqualified at the discretion of the cattle stewards.
5. ALL CATTLE TO BE **COMPLETELY FREE OF HORN OR POLLED.** RECENTLY DEHORND CATTLE WHICH COULD BE SUBJECT TO BLEEDING MAY BE DISQUALIFIED.
6. All cattle excepting Classes 27 and 28 are to be mouthed, tagged and numbered by an official mouther before arrival at the grounds. Mouthing may commence from Monday 29th April 2019. **ALL MOUTHING MUST BE COMPLETED WITH NOMINATIONS FORMS TO CARL MOLLER BY MIDNIGHT FRIDAY 24th MAY 2019. Fax: 4983 5402**

EAR TAGS:	ORANGE	Milk Tooth		
ALLFLEX - Numbered Ear Tags	WHITE	2 Tooth	YELLOW	6 Tooth
	BLUE	4 Tooth	PURPLE	8 Tooth
7. All cattle must belong to the exhibitor for three months prior to the Show.
8. All cattle will be judged on the quality, conformation, market suitability and weight for age. In pair and pen classes uniformity may be taken into consideration.
9. The most successful exhibitor will be calculated on the following basis:- Champion 3 points; First place 3 points; Second place 2 points; Third place 1 point. These points relate to Classes 1–28 only. No points are allocated to special awards A-C.
10. Society Sashes for Champion and Class Placings and other listed Special Awards.
11. If the judge decides that the exhibits in any class are not worthy of a prize, then no prize will be awarded.
12. Any dispute that may arise shall be settled by no less than two of the Cattle Committee and the Chief Steward and their decision is final.
13. Only Stewards have the right to alter and transfer any entry to a more suitable class.
14. The Committee undertakes to care for all cattle exhibited but will not be held responsible for any loss whatsoever.
15. Cattle in Classes 8 to 28 are to be **pasture or crop fed only.**
16. Entries in Classes 17 'Clermont Show Charity Class' are for display only. Cattle will not be judged. In 2019 entries in Class 17 will be sold, with 50% of the proceeds going to the CQ Rescue Helicopter, and 50% to Royal Flying Doctor Service.
17. All entries to be exhibited under D.P.I Regulations with accompanying NATIONAL VENDER DECLARATION FORMS, and be **implanted with an NLIS device.**
18. EXHIBITS in the Grain Fed Section may be lot fed or 'grain assisted'
19. **DEFINITELY NO GRAIN FED STOCK INCLUDING 'GRAIN ASSISTED' CATTLE MAY BE ENTERED IN PASTURE OR CROP FED SECTION.**

GRAIN FED SECTION

1. **SINGLE STEER most suitable for JAPANESE MARKET.**
No more than 4 TEETH.
2. **PAIR OF STEERS most suitable for JAPANESE MARKET.**
No more than 4 TEETH.
3. **SINGLE STEER most suitable for LOCAL TRADE.**
No more than 2 TEETH.
4. **SINGLE HEIFER most suitable for LOCAL TRADE.**
No more than 2 TEETH.
5. **SINGLE HEIFER most suitable for JAPANESE MARKET.**
No more than 4 TEETH.
6. **PAIR OF HEIFERS most suitable for LOCAL TRADE.**
No more than 2 TEETH
7. **CATTLEMEN'S CHALLENGE PEN OF 3 STEERS most suitable for the 100 DAY GRAIN FED MARKET**

PASTURE OR CROP FED SECTION

8. **SINGLE 6 TOOTH STEER.**
9. **SINGLE 4 TOOTH STEER.**
10. **SINGLE 2 TOOTH STEER.**
11. **SINGLE MILK TOOTH STEER.**
12. **SINGLE 4 TOOTH HEIFER.**
13. **SINGLE 2 TOOTH HEIFER.**
14. **SINGLE MILK TOOTH HEIFER.**
15. **SINGLE MILK TOOTH VEALER.**
320 kg and under
16. **SINGLE 8 TOOTH COW EMPTY or SPEYED. Must have produced a calf.**
17. **CLERMONT SHOW SOCIETY CHARITY CLASS (male or female exhibits)**
Cattle will not be judged. In 2019 this class will be supporting the CQ Rescue Helicopter & Royal Flying Doctor Service.
18. **PAIR OF 6 TOOTH STEERS.**
19. **PAIR OF 4 TOOTH STEERS.**
20. **PAIR OF 2 TOOTH STEERS.**
21. **PAIR OF MILK TOOTH STEERS.**

22. **PAIR OF HEIFERS.**
No more than 4 TEETH
23. **PEN OF FIVE STEERS most suitable for JAPANESE MARKET.**
No more than 4 TEETH
24. **PEN OF FIVE HEIFERS.**
No more than 4 TEETH
25. **PEN OF FIVE STEERS OR HEIFERS most suitable for LOCAL TRADE.**
No more than 2 TEETH. optimum live weight 440 -520kg
26. **PEN OF FIVE TRADE STEERS.**
No more than 2 TEETH. optimum live weight 520 to 630kg
27. **PEN OF FIVE FEMALES most suitable for EXPORT MARKET.**
No mouthing or ear tagging. Weighed as pen on arrival at grounds. Must be auctioned at Show Sale. Exhibitors with more than 1 pen must clearly identify each pen.
28. **PEN OF TEN STEERS most suitable for JAPANESE MARKET.**
No mouthing or ear tagging. Weighed as pen on arrival at grounds. Must be auctioned at Show Sale. Exhibitors with more than 1 pen must clearly identify each pen.

CHAMPION AND SPECIAL AWARDS

- A. **HEAVIEST COW OF THE SHOW.** Selected from any class except Class 27
- B. **HEAVIEST BULLOCK OF THE SHOW.** Selected from any class except Class 28
- C. **BEAST SHOWING GREATEST WEIGHT FOR AGE. PASTURE or CROP FED**
- D. **CHAMPION PASTURE or CROP FED HEIFER.**
- E. **CHAMPION PASTURE or CROP FED STEER.**
- F. **CHAMPION PAIR, PASTURE OR CROP FED.**
- G. **CHAMPION PASTURE or CROP FED PEN of STEERS or HEIFERS.**
- H. **CHAMPION GRAIN FED STEER.**
- I. **CHAMPION GRAIN FED HEIFER.**
- J. **GRAND CHAMPION EXHIBIT.** chosen from GRAIN, & PASTURE or CROP FED exhibits
- K. **MOST SUCCESSFUL "FIRST TIME" BEEF CATTLE EXHIBITOR.**
- L. **MOST SUCCESSFUL EXHIBITOR in the BEEF division with 15 HEAD OR LESS ENTERED.**
- M. **MOST SUCCESSFUL BEEF CATTLE EXHIBITOR.**
- N. **MOST SUCCESSFUL EXHIBITOR in the BEEF and COMMERCIAL divisions.**

DIVISION B – Commercial Cattle
CHIEF STEWARDS: Michael Borg – Ph: 4983 5174

JUDGE:

REGULATIONS AND CONDITIONS – PLEASE NOTE WELL

1. Entries in Class 1 must be penned by **9.00am Monday 27th May 2019**.
2. Entries in Classes 2 & 3 must be on the Grounds by **10.00am Monday 27th May 2019**.
3. Nominations need to be in the hands of the Chief Steward or your Agent no later than **8.00pm Friday 24th May 2019**.
4. Exhibitors have the option to offer bulls for sale in Belyando Bull Bonanza Sale on Tuesday 29th (as per sale regulations and conditions in schedule). Bulls maybe exhibited in the class and not offered for sale.
5. **All entries to be implanted with an NLIS device & must have an accompanying National Vender Declaration Form.**
6. Cattle nominated in the Commercial section **are not eligible for entry in any other section of the 2019 Show.**
7. ALL CATTLE IN CLASSES 2 & 3 ARE TO BE COMPLETELY FREE OF HORN OR POLLED. RECENTLY DEHORNED CATTLE WHICH COULD BE SUBJECT TO BLEEDING MAY BE DISQUALIFIED.
8. All entries nominated in Class 2 & 3 must be auctioned at the Show Sale on Tuesday 28th May 2019 under the same Terms and Conditions as in Division A – Beef Cattle (clause 3).
9. Most Successful Exhibitor points allocated as in Division A – Beef Cattle.
10. All fees are GST inclusive.

CLASS 1

PEN OF 3 BULLS – NOT TO BE EXHIBITED IN THE STUD SECTION.

Nomination \$33 per pen.

CLASS 2

PEN OF STORE STEERS – Minimum number 15.

Store conditioned. No mouthing or ear tagging. Weighed as a pen following overnight wet curfew.
Nomination: \$77.00 per pen.

CLASS 3

PEN OF STORE HEIFERS – Minimum number 15.

Store conditioned. No mouthing or ear tagging. Weighed as a pen following overnight wet curfew.
Nomination: \$77.00 per pen.

MOST SUCCESSFUL COMMERCIAL EXHIBITOR.

CHAMPION PEN OF COMMERCIAL CATTLE.

Belyando Bull Bonanza Sale – Commencing approx. 2.30pm Tuesday 28th

REGULATIONS AND CONDITIONS – PLEASE NOTE WELL

1. All bulls must be exhibited in the ‘The pen of 3 Commercial Bulls’ class 1 of the Commercial section.
2. All bulls are to be nominated through your preferred agent by 24th May.
3. Nominations will be \$33 for a pen of 3 bulls (Nomination fee for Class 1)
4. Exhibits sold shall be levied 6.6% (inc GST) commission on the sale price.
5. Additional sale yard charges from council will apply.
6. Bulls to be offered using the Helmsman Auction system.
7. Sellers will nominate their reserve price/starting price prior to the sale commencement.
8. The committee will provide numbered ears tags which **must** be applied to **all and only** sale bulls prior to arriving at yards.
9. Any pedigree, weights or fertility information etc. displayed with sale bulls will be the exhibitor’s responsibility.
10. Show committee will advertise sale information in schedules, timelines & local rag. This advertising will be an overview of the sale including sale time and location. **Extra advertising to be the exhibitor’s responsibility.**
11. Feeding of bulls to be exhibitors’ responsibility for the duration of show.
12. Sale bulls to be lined up in sale order, separate from non-sale bulls on morning Tuesday 28th. Chief Steward to coordinate with exhibitors.

Refreshments during bull sale
compliments of Moongool Charolais

DIVISION C – Clermont Cattlemen’s Challenge

CHIEF STEWARD: David Conachan – Ph: (07) 49835389 / Email: clydevale@skymesh.com.au

REGULATIONS & CONDITIONS – PLEASE NOTE WELL

1. Entries must be on the grounds by **10.00 am Sunday 26th May 2019**
2. All intending exhibitors are requested to have their entries in the hands of the Steward or their Agent no later than **8.00 pm Friday 24th May 2019**. Entries will be accepted on a ‘first in first served’ basis with Chief Steward Michael Shannon.
3. **Entries are restricted to 1 pen of 5 steers per exhibitor.**
4. **All entries need to be implanted with an NLIS device & must have an accompanying National Vender Declaration.**
5. Cattle nominated in the Clermont Cattlemen’s Challenge are not eligible for entry in any other section of the 2019 Show.
6. **ALL STEERS ARE TO BE COMPLETELY FREE OF HORN OR POLLED. RECENTLY DEHORND CATTLE WHICH COULD BE SUBJECT TO BLEEDING MAY BE DISQUALIFIED.**
7. **Nomination Fee of \$1182.50** to be paid in full upon nomination. Nomination fee has been calculated as follows: Agistment of 5 head (5 x \$4.40 x 52 weeks = \$1144); Show nomination (5 x \$7.70 = \$38.50). Additional fees for grain feeding will be incurred during the period of the competition. The excess payment in agistment fees will be used by the Show Committee as an interim payment of feedlot expenses.
8. Feedlot costs will be negotiated by the Challenge stewards and the outstanding balance will be billed direct to the exhibitor by the Show Committee. Interim feedlot payment may be levied & balance on the completion of the Challenge.
9. Price for slaughter cattle will be negotiated by the Challenge stewards, with live steers to be sold at auction under Sale conditions as outlined in DIVISION A – Beef Cattle
10. Any stock losses will be the exhibitors’ risk. However, if a loss should occur the exhibitor may still compete without any penalty.
11. All fees are GST inclusive.

OUTLINE OF THE CLERMONT CATTLEMEN’S CHALLENGE

2019

1. A pen of 5 steers to be entered and judged as stores **most suitable to grow for the 100 day grain fed market.** (After approx. 260 days on grass then 100 days grain fed in a feedlot)
2. Steers will be weighed as a pen after an overnight curfew.
3. **Estimated optimal live weight: 280 – 320 kg. Steers to be judged on suitability in this weight range.**
4. The committee recommends that all entries be treated with Tick Fever Vaccine (optimum 3-4 weeks prior to show day)
5. Entries will be treated with Longrange Botulinum, Ultravac 7 in 1, Dectomax, Compudose 400
6. All entries to be agisted for approximately 9 – 10 months

2020

Approx. 100 days prior to the Show

1. All entries to be transferred to a suitable local feedlot as arranged by the Challenge stewards.

Approx. 20 – 30 days prior to the Show

2. All exhibitors or their representative to meet at feedlot to select animals for various 2019 Show classes.
3. 1 steer will be removed from the competition. This steer may be taken home, sold at the show sale, nominated in another class at the show, or privately consigned elsewhere.
4. 1 steer will be selected for slaughter at QLD processing facility.
5. One cut of beef (rib eye) resumed by Beef Cattle Committee for **Taste Test Competition at 12.30pm on Show Tuesday.**
6. Remainder of carcass will be sold to QLD processing facility.
7. This steer will also be judged in a Carcass Competition. Steers to be sent to the abattoir as arranged by stewards prior to Show Week and judged using chiller assessment. Final judging criteria to be arranged prior to slaughter.
8. 3 steers to be selected for judging live in the Clermont Show Beef Cattle sections as a **“Pen of 3 steers most suitable for the 100 day grain fed market”** sponsored by ANZ Agribusiness.
9. These same three steers will also compete for **“Pen of 3 steers with the highest weight gain”**.
10. Points will be awarded for each of the 5 sections of the competition. **Clermont Challenge Cattle King (overall Champion) sponsored by Clermont Veterinary Services** will be determined on the following basis:- First 5 points; Second 4 points; Third 3 points; Forth 2 points; Fifth 1 point.

‘Breed Society Prize Money’

The Droughtmaster Society has offered prize money of \$200 if the Grand Champion Prime Exhibit is an animal nominated as a Droughtmaster or Droughtmaster cross, provided there are 50 or more entries in the prime cattle section.

‘Breed Society Prize Money’

The Santa Gertrudis Breeders’ Association has offered prize money of \$200 special prize for the exhibitor with most points for ‘pure santa’ or ‘infused’ entries.

SECTION A – 2018– 2019 SHOWS

CLASS 1 CLERMONT CATTLEMEN’S CHALLENGE – PEN OF STEERS MOST SUITABLE TO GROW FOR THE 100 DAY GRAIN FED MARKET.

Of the ‘PEN OF 5 STORE STEERS’ most suitable to grow for the 100 day grain fed market’ entered in the 2018 Show, at the 2019 Show, 3 steers will be judged as a pen ‘on the hoof’, 1 steer will be slaughtered at QLD processing facility approx. 14 days prior to the Show with 1 rib fillet retained for the Taste Testing Competition. This steer will also be judged as a 100 day grain fed carcass. 1 steer removed from the competition, may be entered elsewhere in the grain fed section, taken home, sold at show sale, or privately consigned elsewhere.

CLASS 1A **PEN OF 3 STEERS WITH THE HIGHEST WEIGHT GAIN**

Special prize for the PEN OF STEERS WITH THE HIGHEST WEIGHT GAIN ON GRASS

Special prize for the PEN OF STEERS WITH THE HIGHEST WEIGHT GAIN ON GRAIN

CLASS 1B **SINGLE CARCASS MOST SUITABLE FOR THE 100 DAY GRAIN FED MARKET**

CLASS 1C **TASTE TESTING COMPETITION**

Special prize for the ‘CONSUMERS CHOICE’ in the BEEF TASTE TESTING

CLASS 1D **PEN OF 3 GRAIN FED STEERS MOST SUITABLE FOR THE 100 DAY GRAIN FED MARKET**

(Class 7 – BEEF SECTION – GRAIN FED)

Ted & Jenny Murphy – Tay Glen Field Day - Philp & Deborah Reid – Paringa Field Day

Riverina (Australia) Pty Ltd – Paringa Field Day - D & S Conachan - *Clydevale* – Cartage

Belyando Produce & Colemans Stockfoods – Supplement at Tay Glen

THE CLERMONT CATTLE KING

Sponsored by **Clermont Veterinary Services** (\$1000 of ‘on farm Veterinary Services’ plus Akubra Hats for Cattle King) for the entry gaining most points in the pen of 3 steers with the highest weight gain; Single carcass most suitable for the 100 day grain fed market; Taste Testing competition; Pen of 3 steers most suitable for the 100 day grain fed market & Pen of 5 store steers most suitable to grow for the 100 day grain fed market (judged at the 2018 Show)

CLASS 2 – For the 2019 Show

PEN OF 5 STORE STEERS most suitable to grow for the 100 day GRAIN FED MARKET

(After approx. 260 days on grass then 100 days grain fed in a feedlot)

100 days grain fed; optimum dress weight: 320 – 340 kg

Weighed as a pen following overnight wet curfew.

To be judged as stores- **optimum live weight 280 – 320 kg.**

Bonus points awarded for each steer in pen weighing 320kg or under.

400 day Compudose Implants
Dectomax Injectable, Lonrange Botulinum & Ultravac 7 in 1



Product to be administered to all entries upon agistment



Cattlemen's Challenge Taste Test Competition

Who has the tastiest beef?
It's as easy as 1, 2, 3.

1. Meet the cattlemen
2. Taste grain-fed beef
3. Vote with your palate



Everyone is welcome!
At the conclusion of the cattle sale (~12.30pm)
Tuesday 28th May near the 'Agents Kiosk'

Thank you to all the sponsors of the 2019 Taste Test

YOUNG JUDGES COMPETITION – BEEF CATTLE

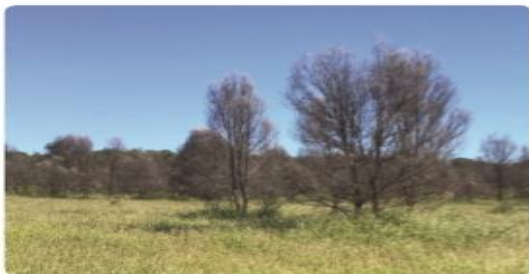
Commencing 11am Wednesday 29th May 2019
Competitors to be under 25 years of age on 1st May 2019
and to be a Queensland resident for at least 3 months prior
to the show or be attending a Queensland college. The
winners from Class 2 and Class 3 at the Clermont Show
may be eligible to compete in the Central Highlands
Competition, the winner of which can compete at the State
final at the Brisbane Exhibition in August.

Classes:

1. Best Junior Judge under 13 years.
2. Best Junior Judge 13 years and under 17 years.
3. Best Junior Judge 17 years and under 25 years.

GP
Regain 400
Herbicide

**Double Strength.
Faster Uptake.**



Control of brigalow, 20 months after application near Capella, QLD. GP Regain 400 provides excellent control of brigalow, parkinsonia, prickly acacia and currant bush.



**Latest tool in regrowth and woody
weed control**



Australian owned and manufactured



**Precision application via on-farm
consultation and application by
accredited aerial operators.**

National Sales Manager

PAUL HUBBARD 0427 283 422

Queensland Sales Consultant

SAM DOUST 0491 273 797

Granular Products Pty Ltd. ROCKHAMPTON, QLD

Granular Products :::
www.granularproducts.com

BELYANDO BULL BONANZA

At the 2019 Clermont Show you get the opportunity to purchase some of the best
bulls the Isaac region has to offer.

This multi-vendor sale will offer bulls of show quality selected from the Commercial
Cattle Section Class 1 of the Clermont Show

Helmsman Auction

**Commencing approx. 2.30pm Tuesday, May 28th, 2019
Ladies Annex beside the bar - Clermont Showgrounds**

CLERMONT RODEO AND SHOW SOCIETY INC.

LIFE MEMBERS

1973 -	C.D. Tindale	<i>Charley</i>	1998 -	V.W.G. Appleton	<i>Bill</i>
	J.D. Goodwin	<i>Jim</i>		C.F. Flohr	<i>Charlie</i>
	A.D. Muirhead	<i>Arthur</i>	1999 -	M.H. Henn	<i>Margaret</i>
1974 -	R.W. Tindale	<i>Roy</i>		G.A. Martyn	<i>Toby</i>
1981 -	S.A. Burnett	<i>Stephen</i>	2000 -	A.M. Henn	<i>Tony</i>
	C.J. Dennis	<i>Colin</i>		G.C. Rickertt	<i>Gordon</i>
	R.F. Lawrence	<i>Roy</i>		P. Gittens	<i>Perry</i>
	L. Lawrence	<i>Les</i>	2001 -	J.C. Pownall	<i>John</i>
1985 -	D.J. Salmond	<i>Des</i>	2002 -	A.P. Struss	<i>Tony</i>
1987 -	W.E. Faint	<i>Bill</i>		S.M. Struss	<i>Susan</i>
	A.L. Pownall	<i>Allan</i>		J.S. Burnett	<i>John</i>
	W.R. Murphy	<i>Bill</i>		J.M. Salmond	<i>Joanne</i>
1988 -	F. Patch	<i>Cobber</i>	2003 -	B.H. Sporne	<i>Brian</i>
1989 -	J.D. Ilott	<i>John</i>	2008 -	S.R. Rickertt	<i>Susan</i>
	A.C. Dixon	<i>Arthur</i>	2010 -	J.M. Burnett	<i>Jan</i>
1990 -	P.A. Pownall	<i>Pam</i>	2012 -	R.A. O'Sullivan	<i>Robert</i>
	I.C. Pownall	<i>Ian</i>		R.M. O'Sullivan	<i>Rae</i>
	R.C.B. Whelan	<i>Rob</i>	2015 -	J. Bridgeman	<i>Jean</i>
1995 -	D.H. Kleier	<i>Don</i>	2016 -	A. Baczynski	<i>Ann</i>
	A.R. Hicks	<i>Doey</i>	2018 -	D. Keene	<i>David</i>
1996 -	L.V. Flohr	<i>Les</i>		L. Keene	<i>Lynette</i>

MEMBER'S SUBSCRIPTION

The Annual subscription is \$44.00 (inc. GST) and entitles a Member to one Gent's and one Lady's ticket and all children of the family from 5 to 15 years of age or Single Membership is \$22.00 (inc. GST) which is for one person. The membership is payable in advance and is for free entry to each day of the Clermont Show, Campdraft and Rodeo.

If you wish to become a Member, please detach this form and forward together with your cheque or for direct deposit please pay into; **BSB:014-550 and A/C 3994-94267** (Use surname as reference and return slip to below address to notify of payment)

The Secretary
 Clermont Rodeo and Show Society
 P O Box 790
 CLERMONT Q 4721 Date

Please find **enclosed** cheque for \$ representing membership subscription for the year

NameEmail:.....

Address